

# *Just Open Your Eyes*

## Susan Meiselas on Making Images

January 25 - April 14, 2024

**2024 Grossman Visiting Artist-in-Residence**



from the series *44 Irving Street, 1971*

*Just Open Your Eyes: Susan Meiselas On Making Images* brings together a wide range of works from Meiselas' portfolio that breaks the notion of the grand narrative of artist production but asserts a sensitive and humanistic approach to image making that zigs and zags between personal narratives and historical moments.

This exhibition hopes to inspire image-making with eyes and hearts open, to see and show the world not just how it is, but how it could be.

In her publication, *Eyes Open* (Aperture, 2021), photographer Susan Meiselas ends the book with a prompt to “just open your eyes,” which has carried her through five decades of work. This exhibition enacts this prompt and hopes to share the message with the students at Lafayette College and the greater Lehigh Valley community.

**FEB  
19**

**ARTIST TALK: 4:30PM in LANDIS CIMENA | 219 N 3RD ST**

**RECEPTION: 5:30PM in GROSSMAN GALLERY | 243 N 3RD ST**



## 44 Irving Street, 1971

Susan Meiselas' earliest work, "44 Irving Street" is a series of portraits with accompanying text. Simultaneously dependent and divergent, each text compliments an image to give a different perspective that enriches the viewing experience.



## Archives of Abuse, 1990-92

This body of work documented how the San Francisco Police Department responded to calls of domestic violence. Meiselas began with photographing at these sites and subsequently moved to making images with the available police files. This series was part of a bigger campaign to raise public awareness of domestic violence by installing the work as bus shelter posters, which was supported by the Liz Claiborne Foundation.

## Mail-a-Bride, 1986

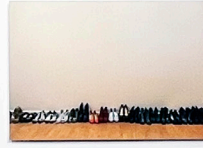
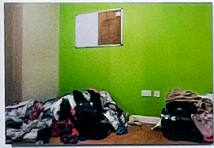
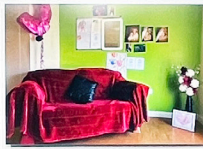
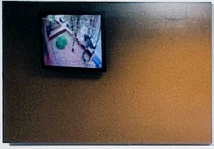
This editorial series was published in the New York Times Magazine with an article written by Lisa Belkin on July 27, 1986, which portrayed the mail-order bride culture in the 1980s. The images convey a strange performative intimacy while also interrupting the notion of wedding pictures.



## Pandora's Box, 1995

“I came off 18th Street NYC, went up the elevator and entered. It was like a film set or backstage at a theatre. I was stunned by the sense of performance and the level at which interiors had been constructed, how the walls were painted, and how each room had its own identity - the Versailles room, the medical room, the dungeon. I was fascinated by the ways in which the mistresses chose their clients and the clients chose their mistresses.”

- Susan Meiselas



## A Room of Their Own, 2017

In collaboration with women of the Black Country in the UK, Meiselas spent time in shelters to portray the journeys they were willing to share. Having “A Room of Their Own” presents conflicting notions of support and confinement.

### ABOUT THE ARTIST

Susan Meiselas is a documentary photographer based in New York. Meiselas is well known for her documentation of human rights issues in Latin America. Her photographs are included in North American and international collections. In 1992 she was made a MacArthur Fellow, received a Guggenheim Fellowship (2015), and most recently the Deutsche Börse Photography Foundation Prize (2019) and the first Women in Motion Award from Kering and the Rencontres d'Arles. Mediations, a survey exhibition of her work from the 1970s to the present was recently exhibited at the Fundació Antoni Tàpies, Jeu de Paume, San Francisco Museum of Modern Art, and the Instituto Moreira Salles in São Paulo, Kunst Haus Wien, C/O Berlin, Kunstmuseum Magdeburg, and FOMU in Antwerp.

She has been the President of the Magnum Foundation since 2007, with a mission to expand diversity and creativity in documentary photography.

[Visit the artist's website to learn more: www.susanmeiselas.com](http://www.susanmeiselas.com)

## Grossman Visiting Artist-in-Residence

The Richard A. and Rissa W. Grossman Artist-in-Residence and Exhibition Series was established by Richard A. Grossman '64 and his wife, Rissa W. to provide opportunities for intensive interaction between students and major artists. The series also supports presentations of significant exhibitions. The program has brought to campus some of the most significant artists of the later 20th and early 21st century. The strength of the residency lies not only in the quality of the artists, but also in the intensity of their interaction with the students.