



**CURLEE RAVEN HOLTON**  
(American)

*The Seduction*, 2012  
from *Othello Re-imagined*  
etching  
artist's proof (AP)



**CURLEE RAVEN HOLTON**  
(American)

*Behold the Moor of Venice*, 2012  
from *Othello Re-imagined*  
etching  
AP



**CURLEE RAVEN HOLTON**  
(American)

*Knowledge of Betrayal*, 2012  
from *Othello Re-imagined*  
etching  
AP



**MELVIN EDWARDS**  
(American)

Untitled, 2005  
etching  
AP5



**JOSEPH HOLSTON**  
(American, 1944-)

*Man in Boat*, 2005  
etching  
66/100



**ELIZABETH CATLETT**  
(American, 1915-2012)

*Francisco*, 2006  
serigraph  
1/40



**ROLANDO ROJAS**  
(Mexican, 1970)

*Besando a la animala*,  
2005  
serigraph  
9/20



**DUNCAN BULLEN**  
(British 1962- )

*Silence & Light*, 2005  
mezzotint  
AP  
four from a series of  
six shown here.



**JANNA VAN HASSELT**  
(New Zealand, 1980-)

*AMBI-tions: Response*,  
2006  
book cover, lithograph  
and serigraph on fabric  
1/1



**TODD AYOUNG AND  
CARLOS ANDRADE**

*Elsewhere*, 2002  
mixed media,  
electronics  
artists's book

## EPI-CENTER

Since its founding in 1996, EPI has passionately advocated for printmaking as an indispensable component of cultural and creative engagement. This two-part exhibition is a celebration of EPI's creative impact and the vision of its founding director, master printmaker and David M. '70 and Linda Roth Professor of Art, Curlee Raven Holton.

### A RETROSPECTIVE

Celebrating 20 Years of the  
Experimental Printmaking Institute

Part 1, 1996-2004: September 1-October 7, 2016  
Part 2, 2005-2016: October 15-December 17, 2016





**DAVID C. DRISKELL**  
(American)

*Woman in Interior*, 2008  
lithograph/serigraph  
with collage  
25/75



**WILLIAM T. WILLIAMS**  
(American)

*Bee's Quest*, 2008  
serigraph, 8/25

Williams experimented using different colors.



**WILLIAM T. WILLIAMS**  
(American)

*Monk's Tale*, 2006  
serigraph  
edition of 20



**Process print experiment.**  
Williams created an ink painting using a brush, which became the basis for *Monk's Tale*. It was also scanned and plotted point-by-point in a CAD program; cut into a sheet of acrylic with a CNC (computer numerical control) machine. A CNC is a computerized router that follows a list of numbers that tells the router where and how deep to cut. Once the plate was cut it could be used to make embossments, relief prints and even intaglio prints.



**MELVIN EDWARDS**  
(American, 1937-)

*Transcendence*, 2007  
49/50  
serigraph



**BENNY ANDREWS**  
(American, 1930-2006)

*Blues Player*, 2006  
5/10  
etching



**MAUREEN CUMMINS**  
(American, 1963-)

*Divide & Conquer*, 2007  
artist's book  
edition 35/40



**TAFA FIADZIGBE**  
(Ghanaian, active  
21st century)

*Two Drummers, One Song*, 2011  
edition of 150  
textured screen print



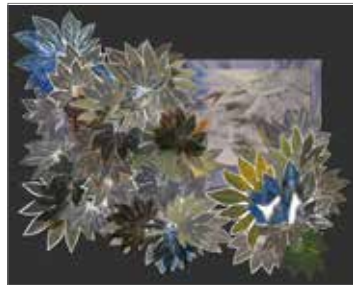
**BARBARA BULLOCK**  
(American, ca. 1950)

*Seeing is Believing*,  
2011  
7/22  
serigraph



**CHAKAIA BOOKER**  
(American)

*Four Twenty One*, 2011  
edition 3/12  
serigraph, digital print,  
mixed media, plexiglas



**MARTHA JACKSON JARVIS**  
(American, 1952)

*Leaves, Letters, and Lavender*, 2009  
mixed media: collage,  
silkscreen, lithograph,  
digital print, polystyrene,  
acetate; edition of 15



**KARIMA MUYAES**  
(Mexico, 1960-)

*La vida es un Teatro*,  
2011  
woodblock  
6/20



**AMAYA ESPINOZA**  
(Spanish, 1963-)

*The Man of the Future*,  
2014  
artist's book  
edition 11/20



**MARYANN MILLER**  
(American)

*Mutations from Logos*,  
2003  
monotypes, collage  
1/1



**ALISON SAAR**  
(American, 1956-)

*Fall*, 2014  
etching and chine collé  
edition of a25



**CURLEE RAVEN HOLTON**  
(American)  
with Molefi Asante, Jr.  
*Time*, 2003  
artist's book, mixed  
media, including CD  
1/3



**NIKKY FINNEY**  
(American, 1957-)

*The Battle of and for the  
Black Face Boy*, 2015  
artist's book, accordion  
in slip case, ink jet,  
edition size 30



**KUMI KORF**  
(Japanese-American)

*Hunter-Gatherer:  
Family Business, Mario*,  
2002  
mixed media, including  
intaglio prints, letterpress



**MICAELA AMATO**  
(American)

*Hearing Light, Seeing  
Sound*, 2002  
cast paper with  
interior pages



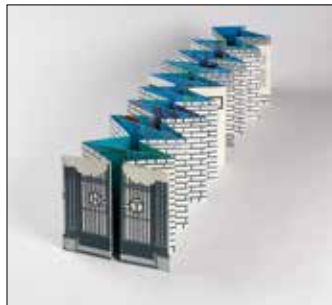
**LEE UPTON AND  
CURLEE HOLTON**  
(American)

*The Maid and the Pond*,  
2006  
artists' book, digital,  
watercolor



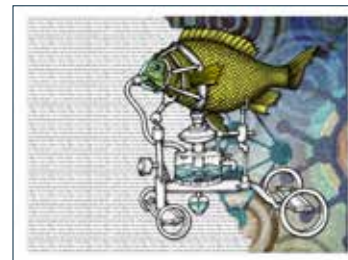
**SHELLIE JACOBSON**  
(American)

*HA HA HA*, 2002  
Digitized drawings  
artist's book



**MARIA PISANO**  
(American)

*Tunnel Vision*, 2004  
collograph, chine  
colle, letterpress,  
plexi box



**JASE CLARK**  
(American)

*Unstill Life*, 2016  
serigraph, digital  
pigment



**NENE HUMPHREY**  
(American 1947-)

*out of the nothing that  
is*, 2008  
artist book:  
planographic prints,





**JOSEPH HOLSTON**  
(American, 1944-)

*Letters From Birmingham*, 2016  
etching



**HOLLY TROSTLE BRIGHAM**  
(American, ca. 1960)

*T. de Lempicka: On Autopilot*, 2012  
etching with chine collé  
5/10



**LEON N. HICKS**  
(American, 1933-)

*Inner City: Series 1*, 2015  
working proof.  
shown with copper  
engraving plate  
(above), ca. 1980



**ALISON SAAR**  
(American, 1956-)

*Brier Patch Blues*, 2014  
woodblock, detail



**ALLISON SAAR**  
(American, 1956-)

*Brier Patch Blues*, 2014  
woodblock and relief  
60/60



**AUDREY FLACK**  
(American, 1931-)

*Une Bouchee d'Amour*,  
2013  
digital and screenprint  
shown with proof  
annotated by artist.



**Audrey Flack**  
(American, 1931-)

*The Ecstasy of Saint Theresa*, 2013  
70/75  
serigraph and digital print



**Faith Ringgold**  
(American, 1930-)

*Here Come Moses*,  
2014  
serigraph  
Inscribed by: Twenty  
years of art at EPI  
Faith Ringgold 2014



**WILLIE COLE**  
(American, 1955-)

*The Home and Hearth*,  
2011  
72/75  
serigraph



**WILLIE COLE**  
(American, 1955-)

*American Domestic*,  
2016  
serigraph and digital  
pigment print



**RICHARD MAYHEW**  
(American, 1924-)

*Atascadero*, 2012  
BAT edition of 75, with  
artist's comments  
serigraph



**RICHARD MAYHEW**  
(American, 1924-)

*Summation*, 2013  
37/150  
serigraph  
Mayhew, seated, is  
signing the prints.